

— Expertise that delivers

HITACHI

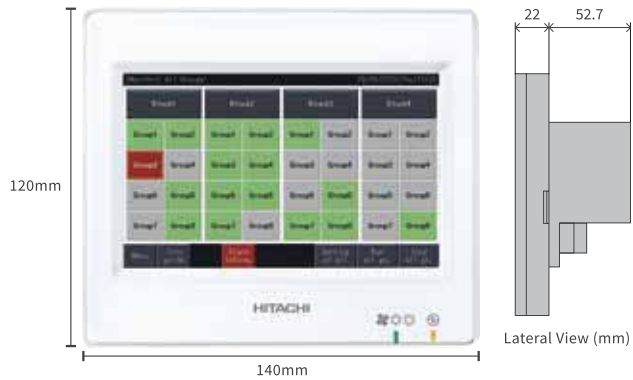
**Variable Refrigerant Flow System
SET FREE SIGMA**

Cooling & Heating



Centralized Control System

1) Central Station Mini PSC-A32MN for Small-scale buildings



Most compact in our touch panel centralized controller. Its down-to-detail control functionalities, such as Weekly Scheduling, Accumulated Work Hours, etc., help you save energy. Up to 32 remote-controlled groups and up to 160 indoor units can be connected to the single air-conditioning system.

CAPACITY	
Remote Controller Group	32
Group	32
Block	4 Patterns (2/4/8/16)
Indoor Unit	160
Outdoor Unit	64
Building Scale	Small

SPECIFICATIONS	
Rated Power Supply	1-, AC 100-240V, 50/60Hz
Electrical Power Consumption	20W (Max.)
Communication Unit	Units of Adopting for H-LINK
Communication Line	Non-polar 2-wire
Communication Speed	9,600bps
Wiring Length	1,000m (Total Length)
Display	5.0-inch Wide Color LCD (Full Dot)
Display Control	Touch Panel

FUNCTIONS	
Monitor Function	• Run/Stop/Abnormality • Setting Temperature
	• RCS Operation Prohibited Setting
Control Function	• Accumulated Operating Time
	• Operation Mode • Setting Fan Speed
	• Setting Louver • Filter Sign • Alarm Code"
	• Run/Stop* • Fan Speed
	• Operation Mode • Louver
	• Temperature Setting
	• RCS Operation Prohibited
	• Filter Sign Reset

*: "All Groups Run/Stop" command signal exception function for selected groups is available by "Exception of Run/Stop Operation" function.

2) Central Station EZ PSC-A64GT for Medium-scale Buildings



Easy control with 8.5 inch colour touch panel. Its down-to-detail control functionalities, such as Weekly Scheduling, Accumulated Work Hours, etc., help you save energy. Up to 64 remote-controlled groups and up to 160 indoor units can be connected to the single air-conditioning system.

CAPACITY	
Remote Controller Group	64
Group	64
Block	4 Patterns
Indoor Unit	160
Outdoor Unit	64
Building Scale	Small - Medium

SPECIFICATIONS	
Rated Power Supply	1-, AC 100-240V, 50/60Hz
Electrical Power Consumption	30W (Max.)
Communication Unit	Units of Adopting for H-LINK
Communication Line	Non-polar 2-wire
Communication Speed	9,600bps
Wiring Length	1,000m (Total Length)
Display	8.5-inch Wide Color LCD (Full Dot)
Display Control	Touch Panel

FUNCTIONS	
Monitor Function	• Run/Stop/Abnormality • Setting Temperature
	• RCS Operation Prohibited Setting
Control Function	• Accumulated Operating Time
	• Operation Mode • Setting Fan Speed
	• Setting Louver • Filter Sign • Alarm Code
	• Run/Stop* • Fan Speed
	• Operation Mode • Louver
	• Temperature Setting
	• RCS Operation Prohibited
	• Filter Sign Reset

*: "All Groups Run/Stop" command signal exception function for selected groups is available by "Exception of Run/Stop Ope." function.

3) Central Station PSC-A64S for Small-medium-scale Buildings



Outer Dimensions (mm)		
H	W	D
120.0	120.0	70.5
Outer Dimensions (inch)		
H	W	D
4.72	4.72	2.78
Weight		
grams	pounds	
300 g	0.6 lbs	

- By connecting to the H-LINK, up to 64 remote control groups and 160 indoor units can be controlled. Up to 8 controllers can be connected to the H-LINK.
- In addition to basic controls such as settings for operation / stop, operation mode and temperature, air quantity and auto louver can be set. If a problem occurs, an alarm code immediately shows the details of the problem.
- An external input terminal is provided as standard. External signals enable the following functions: central operation / stop, demand control, emergency stop, central operation output and central alarm output.
- Can be used in combination with the ON / OFF Controller.

4) 7 Day Timer PSC-A1T

Compatible with the H-LINK II



- By using PSC-A1T with PSC-5S, PSC-A64S or PC-AR controllers, the air conditioners controlled by them can be operated according to a schedule.
- The timer can be set at 7-day intervals and operation/stop can be set 3 times daily.
- Remote control can be prohibited in accordance with the OFF time (when used with PSC-5S, PSC-A64S and PC-AR).
- Two types of weekly schedule (A and B) can be set, and can easily be changed for summer and winter.
- Settings are all digitally displayed, allowing operations and settings to be checked easily.
- The power failure backup function prevents the timer from being stopped by a power failure lasting up to 2 weeks.

5) Centralized ON/OFF Controller PSC-A16RS

Compatible with the H-LINK II Up to 160 indoor units Up to 16 remote control groups



- Only performs operation/stop control per remote control group.
- By connecting to the H-LINK, up to 16 remote control groups and 160 indoor units can be controlled. Up to 8 units can be connected to the H-LINK.
- An external input terminal is provided as standard. External signals enable the following functions: central operation/stop, emergency stop, central operation output, central alarm output
- Can be used in combination with the Central Station.

* Make sure to use it with a remote control switch. Indoor units cannot be used without a remote control switch.
* There are restrictions on remote group registration. Please contact our sales staff for more information.

Outer Dimensions (mm)		
H	W	D
120.0	120.0	68.5
Outer Dimensions (Inch)		
H	W	D
4.72	4.72	2.70
Weight		
Grams	Pounds	
300 g	0.7 lbs	

6) Central Station NT PSC-A128Web3

Managing maximum 128 groups of air-conditioners. Upto 160 indoor and 64 outdoor units can be controlled and monitored with just one computer. Touch panel and web operation makes it user friendly.



Easy-To-Use Design

The newly adopted colour indication or panel icon will help you recognize each unit status and manage your air conditioner more efficiently.

Operation Mode	On (Cool)	On (Heat)	On (Dry)	On (Fan)	On (Auto)	On (in Multiple Mode)	Alarm	Off
Colour Setting	Light Blue	Orange	Sea Green	Light Grey	Light Blue Orange	Purple	Red	Grey
(With Colour) On								
(Without Colour) Off	Lime Green						Red	Grey

Panel
Icon - based monitoring panel.



Filter

The filtering condition enables you to check the unit easily and quickly.

Schedule

- Weekly setting (up to 16 actions per day)
- Summer / Winter seasonal setting
- Special days setting



Touch the “Icon Guide” and you can check each icon description along with the details.



[Pattern Setting]



[Weekly Setting]



[Special Day Setting]



Summer - Winter Seasonal Setting



Alarm History

Up to 500 alarms can be recorded. The installer can diagnose the trend of problems in your air conditioner when necessary.

- Remarks
- Use a 2 buttons mouse.
 - LAN with wake on LAN function or RS-232C Interface is required for UPS.
 - The durable period for a management computer may differ from that of air conditioners. Discuss the updating procedures in advance.
 - The required software is included in this product. No preparation is needed.

Specification For Management Computer

	One Connected Unit	Two or Three Connected Units
OS	• Windows 7 Home Premium (32 bit / 64 bit) • Windows 7 Ultimate (32 bit / 64 bit) • Windows 8 Pro (32 bit / 64 bit)	• Windows 7 Professional (32 bit / 64 bit) • Windows 8 (32 bit / 64 bit)
CPU	Intel Core 2 Duo 1.8GHz or more (When it is a specific unit, it should be intel Atom 1.6GHz or more)	
Memory	1GB or more	2GB or more
Monitor	1024 x 768 pixels (Display around 15 inches) 1366 x 768 pixels (Wide screen display) 1280 x 1024 pixels (Display around 17 to 19 inches)	
Browser	• Internet Explorer 8 (32 bit) • Internet Explorer 9 (32 bit) • Internet Explorer 10 (32 bit) • Internet Explorer 11 (32 bit)	
HDD Available Capacity	10GB or more	
Interface	IEEE 802.3 (10BASE-T / 100BASE-TX / 1000BASE-T) or IEEE 802.11 (a/b/g/n)	
Required Software	Java™ Runtime Environment Version 6 Update 33	
Display	Locally-Supplied PC or Touch-Panel PC	
Display Control	Locally-Supplied or Touch-Panel	

7) Central Station EX

For medium-large scale buildings such as hotels, educational facilities, or hospitals, our Central Station EX features a highly intuitive and functional 12.1-inch wide, wall-mountable colourful LCD screen. It controls up to 2,560 indoor units with our proprietary H-LINK system with 15 Extension Adapters (PSC-AD128EX).

New

a) Easy To Read, Easy To Use

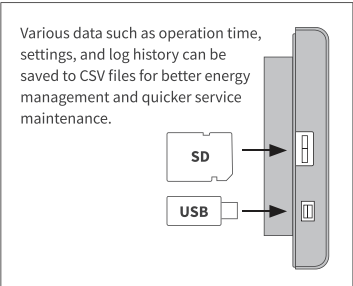
The stand-alone Central Station EX uses a touch screen, capacitive LCD panel.

Better display resolution (1280x800)
Larger screen (12.1 inches wide)



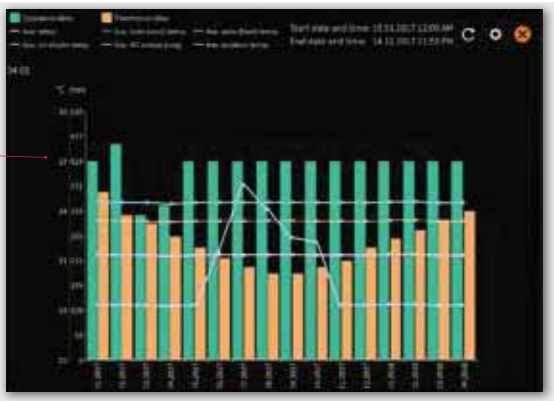
b) Better Energy Saving And Quicker Management

Management reports can be visualized in various ways, and data can be acquired using SD memory and USB flash devices.



The following data can be displayed up to the previous two years:

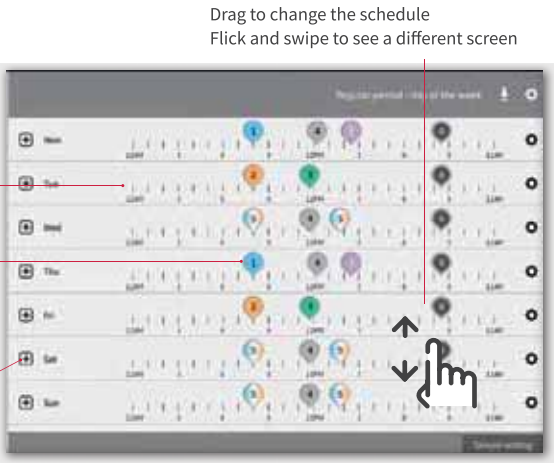
- Accumulated operation time (min.)
- Accumulated thermo-ON time (min.)
- Average air intake temperature of indoor unit
- Average air intake temperature of outdoor unit
- Average setting temperature
- Average RC sensor temperature (It may not be available depending on RC settings.)



c) Improved Schedule Setting

Three long-term category settings are now available: Annual, Summer and Winter.

Touch and hold the memory axis to add the memory to the schedule
Schedules can be colour coded for easy confirmation
Touch the + button to see the detailed schedule



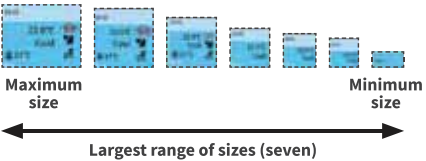
d) Intuitive Interface For Better Monitoring

Three monitoring styles are available.

1. Panel style

The panel colour clearly shows the air conditioner operation mode.

- One maximum-sized panel can show the following items with colors and icons for easy confirmation:
- Room name
 - Run/stop
 - Mode
 - Temperature
 - Fan speed
 - Louver
 - Air intake temperature (RC sensor temperature or indoor temperature)
 - Current status icon



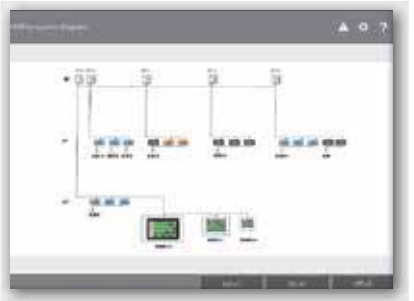
2. Layout style

Upload your own layout images in multiple formats (BMP, JPEG, PNG) and easily arrange indoor units by dragging them on the touch panel.

[Example]



Floor view



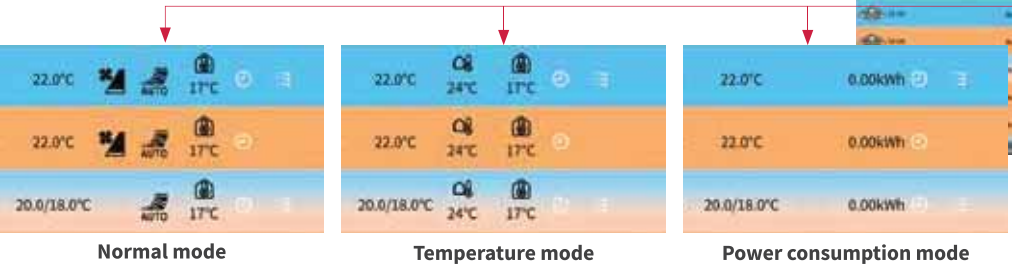
System diagram



Actual room image

3. List style

Setting/control information is shown in a list that can be filtered and sorted for easy confirmation and comparison. In the list display, normal temperature and power consumption are provided so users can select formats according to their desired items.



for medium-large scale of buildings
PSC-A128EX

Model

Central Station EX	PSC-A128EX
Extension Adapter	PSC-AD128EX
Energy Calculation Software (*1)	PSC-AS01EXC

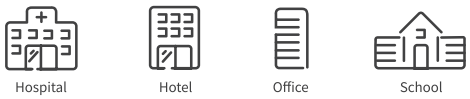
(*1) Required only for calculating electricity

Capacity

H-LINK	16
Remote controller group	2560 (*1)
Group	2048 (*1)
Block	512 (*2)
Area	512 (*2)
Indoor unit	2560 (*1)
Outdoor unit	1024 (*1)
Building scale	Large

(*1) One external adapter can control [160 RC groups/128 groups/160 IDUs/64 ODUs/Each layout], and Central Station EX can connect up to 15 adapters.
(*2) No restriction on the number of H-LINK.

Recommended Facility



Specifications

Rated power supply	100~240VAC ± 10% (50/60Hz)
Electrical power consumption	50W (Max.)
Communication unit	Units of Adopting for H-LINK
Communication line	Nonpolar Two Wires
Communication speed	9,600bps
Wiring length	1,000m (Total Length)
Display	12.1 inch TFT color liquid crystal display
Display control	Touch Panel

Johnson Controls-Hitachi Air Conditioning India Limited

HEAD OFFICE

Hitachi Complex, Karan Nagar, Kadi,
Distt.- Mehsana - 382727, Gujarat, India.

T - +02764 277571

F - +02764 233425

Email: sales@jci-hitachi.com

Website: www.hitachiaircon.in

REGISTERED OFFICE

9th Floor, Abhijeet - I, Mithakhali Six Roads,
Ahmedabad - 380 006, Gujarat, India.

T - +91-79-26402024

CIN No. L29300GJ1984PLC007470



Call: +91-797141-4848, 756788-4848
E-mail: customercare@jci-hitachi.com



This is an e-waste product and should not be mixed with general household waste at the end of its life. For more details kindly visit our website or contact Hitachi Dial-a-Care. Due to continuous research & development, the product specification & features may change without prior notice.

Join us at: <https://www.facebook.com/HitachiHomes/> <https://twitter.com/HitachiHomes> <https://www.youtube.com/user/hitachihome> <https://www.linkedin.com/company/johnson-controls-hitachi-air-conditioning> | Live Chat at www.hitachi-hi.com Download Hitachi iCare App [Google play](https://play.google.com/store/apps/details?id=com.hitachi.hi)

The specifications of this catalog may change without prior notice to allow Hitachi Cooling & Heating to incorporate the latest innovations for its customers. The information contained in this catalog is merely informative. Hitachi Cooling & Heating declines any responsibility in the broadest sense, for damage, direct or indirect, arising from the use and / or interpretation of the recommendations in this catalog.

**Find the products Hitachi Cooling & Heating
with the best service and conditions at your
Hitachi Distributor.**